



Passion creates the show

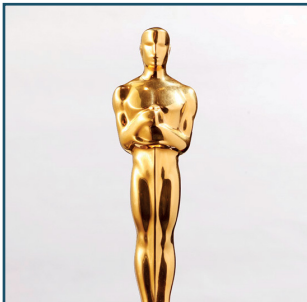
Lighting solutions for studio, stage and TV

osram.com/entertainment

Lighting solutions for studio, stage and TV

Setting the stage for great art

Stage fright? Not any more. Our products for studio, stage and TV guarantee a smooth and dynamic lighting design – and they offer award-winning technologies. We provide the perfect supporting cast in the form of HMI®, HTI®, Lok-it!® and halogen studio lamps. Our powerful and effective lighting solutions will benefit the entertainment industry at every level, from professional film productions to small theatrical events. Prestigious awards – such as the Oscar®, the Primetime Emmy® Engineering Award and the PLASA Innovation Award – have encouraged us to maintain the highest standards in lighting for the entertainment industry. Our many years of experience, broad product range and history of innovation provide the perfect platform for continued success.



HMI® lamps for film and television were awarded in Hollywood an OSCAR® in 1987. Since 1928 OSRAM has been producing lamps for stage lighting, film work and cinema projection.



Acknowledging its outstanding performance and continuous improvement in HMI® technology for the TV industry, OSRAM was awarded the Primetime Emmy® Engineering Award by the Academy of Television Arts & Sciences.





Light is action HMI® – every director's darling

For 55 years, OSRAM HMI® metal halide discharge lamps have been meeting the toughest demands of the film and TV industry. Their technology has received several awards and has become an integral part of film sets around the world.



HMI®

HMI® lamps are AC-operated metal halide discharge lamps, which have excellent color rendering and photometric integrity throughout their life.

- High intensity light simulates daylight color temperature of 6000 K with a CRI >90
- Enormous luminous flux of up to 2.3 million lm
- Very high luminous efficacy of up to 100 lm/W
- Mechanically robust with eXtreme Seal (XS) technology, up to 450°C at the pinch seal
- Capable of hot restrike ignition
- Available in wattages from 200 to 24000 W, single-ended or double-ended

Perfect light whatever the time – day or night.

With an extremely bright light, providing up to 100 lumens per watt, OSRAM HMI® lamps generate a color temperature that closely matches sunlight. It reveals true colors and facilitates daytime filming outdoors. OSRAM HMI® lamps are up to five times more efficient than an incandescent light.





HMI® DIGITAL

Whether using analog or digital film, shooting in modes of 1000 Hz and higher, OSRAM's HMI® DIGITAL line has a lamp for your production. While specially designed to accommodate evolving, high-speed film technology, HMI® DIGITAL still provides every feature needed to light traditional film productions, as well as theatre stages.

- Flicker-free when used with high-speed electronic ballasts (1000 Hz and higher)
- Suited for both analog and digital film production
- Up to 99.9 % less UV emissions (from models equipped with UV-Stop)
- Color temperature of 6000 K for realistic, naturally-lit scenes
- High color rendering index of 90+, exposing true-to-life colors
- Extremely bright light of up to 100 lumens/ watt
- Hot restart capability
- Improved stability and design
- Robust stems, resulting in less breakage during transport
- Round moly-foil construction that evenly distributes heat and current, thus extending lamp life¹⁾
- Splash-proof carrying case is re-usable and allows lamps to be transported safely¹⁾



HMI® packaging

Typical applications

- Film, TV and video productions
- Stage lighting (theatre, opera etc.)
- Exhibition lighting
- Lighting for major events
- Professional photography

Typical luminaires

- Follow and moving-head spotlights
- Fresnel luminaires
- PAR/open luminaires
- Soft and flood lighting

1) 6000-18000 W

Light is excellent Studio halogen lamps

Our studio, stage and TV halogen lamps are excellent examples of the technical advances that can still be achieved in the development of lamps. The key to their success is the combination of high-quality quartz and state-of-the-art lamp technologies. The result is a powerful and economical solution for stage, film and TV lighting.



The culmination of years of experience: technical perfection

Our studio, stage and TV halogen lamps not only meet stringent requirements in terms of luminous flux, luminous efficacy and color temperature, but also through economic and durable operating demands. They are compact, heat-resistant and can be used in many operating positions. Halogen lamps are manufactured from high-quality components and feature biplanar technology. Thanks to biplanar technology, the 1000 W studio halogen lamps for example have an up to 50 % higher luminous intensity in spotlight settings.



Halogen lamps

OSRAM studio, stage and TV halogen lamps offer high luminous efficacy with low power consumption, and a relatively high proportion of visible light compared with infrared thermal radiation.

- High output from 500 to 20000 W
- High luminance
- Constant color temperature throughout their lifetime (3000-3400 K depending on type)
- Instant light
- Operation at line voltage
- Dimmable
- Eco-friendly: halogen lamps contain no mercury, i.e. no special waste disposal requirements

Pinch technology

This innovative design fixes the filament in place over the molded pinch points of the quartz bulb itself. By removing the mounting hooks and quartz bridges used in the past, the mechanical stability of the filament is improved and more resistant to vibration and shock.

- Protected against vibrations by new type of filament holder
- Very robust lamp design
- Improved durability
- Reduction of components and higher purity within the lamp
- Improvement of the halogen cycle



Typical luminaires

- PAR/open luminaires
- Fresnel lens luminaires
- Soft and flood lighting
- Follow and moving-head spotlights
- Color changers

Typical applications

- Film, TV and video productions
- Stage lighting (theatre, opera etc.)
- Exhibition lighting
- Lighting for major events
- Professional photography

Light is breathtaking HPL® and Lok-it!®

Thanks to its incomparable efficiency, our halogen HPL lamp has made a name for itself on stage and in TV studios. And our halogen Lok-it!® enables users to replace lamps in no time at all.



Non-stop entertainment with HPL

The HPL "X" versions of the 575 W and 750 W types have approximately five times longer life than the standard versions. The unique filament design guarantees that these versions make optimal use of the light they generate.

Lok-it!®. The all-around talent.

The bayonet base and lampholder system of the Lok-it!® family of lamps allow for a one-handed lamp replacement within just a few seconds. Lok-it!® lampholders can be easily installed in luminaires and ensure an extremely strong and vibration-proof connection with the lamp base during operation and transportation. The versatile Lok-it!® system enables the user to choose freely between individual lamp technologies (halogen or discharge lamps).



HPL

The special filament design increases the life of the high-performance halogen lamp.

- Less maintenance with long-life versions
- Solid nickel pins for precise alignment of the lamp in the holder
- Reinforced pinch seal for extra mechanical stability
- Special metal heat sink for improved heat dissipation and optimized life

Typical luminaires

- Spotlights
- PAR luminaires
- Fresnel
- Striplights

Typical applications

- Theatre, TV, studio
- Entertainment and architecture lighting



Lok-it!®

Using a standardized bayonet design, the PGJX50, PGJX28, and PGJX36 lamp bases are easily inserted, turned, and locked into place in the corresponding lamp holders, providing for a quick lamp replacement, particularly in areas where luminaires are difficult to access.

- Studio halogen lamp 1200 W with PGJX50 base
- Standardized design
- Safe electrical and mechanical contact
- Compact form
- Robust and vibration resistant

Typical luminaires

- Follow and moving-head spotlights

Typical applications

- Theatre, TV, studio
- Entertainment and architecture lighting
- Professional photography



Light is entertainment in full spectrum

Whether in concerts, light shows, theaters, operas, clubs or TV studios - there is a wide range of applications that high-performance lamps need to cover. That is why we have enhanced our Lok-it!® Power Series family to meet an even broader range of applications. Now there are specific lamps suited to the specific needs of the production - all easily identifiable from one another by the name, label, and the lamp base itself.



© Ralph Lohmann/NPO/NOS/AVROTROS

OSRAM Lok-it!® Power Series:

The OSRAM Lok-it!® Power Series packs a lot of power. The lamps offer a high CRI of 90 across the range and special features, such as boosting or improved thermal resistance, the Lok-it!® Power Series has never been so powerful. Designed to give you broader versatility to meet the needs of a wide array of applications, the latest Power Series lamps provide top performance you can rely on.

The OSRAM Lok-it!® Power Series offers:

- Natural tone of light with CRI of 90 (Brilliant: 95)
- Compact size and short arc gap for use in smaller and brighter fixtures
- Higher luminous efficiency than standard HID lamps
- Optimized filling for uniform light emission and reduced output in the green wavelengths common to HID lamps
- “Plug-and-play” base PGJX28 or PGJX36
- OSRAM PGJX28 and PGJX36 ceramic bases allow a high resistance to high voltage up, to 35kV

Triple Power Effect

The OSRAM Lok-it!® Power Series comes with Triple Power, identified by the symbols which appear on the outside of the box:



Power Color

New filling, as well as optimized electrodes and bulb geometry, make for a CRI as high as 95.



Power Heat

With ZrO₂ coating, eXtreme Seal (XS) Technology and additional improvements, achieving thermal re-sistance of ~500° C is now possible.



Power Boost

The improved ceramic base and burner design with an optimized filling, allows the lamp to be driven higher on demand.

A clearly defined spotlight sets the stage for a vivid concert experience with natural and brilliant lighting.



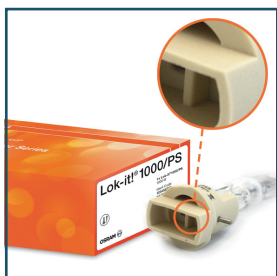
© Ralph Larmann

The right lamp for every job

In addition to the standard Lok-it!® PS, there are two other versions: Lok-it!® PS Brilliant with a CRI of 95, and Blue with an intense color temperature of 7500 K.

| Name | Feature | Benefit | Key Application |
|-----------------------|---------|---|------------------|
| Lok-it!®/PS | 950 h | Stable performance and reliability | Concert lighting |
| Lok-it!®/PS Brilliant | CRI 95 | Life-like colors and natural skin tones | Theatre lighting |
| Lok-it!®/PS Blue | 7500 K | Bright whites for cutting through the other colors on stage | Concert lighting |

The lamps can also be identified by the color on the bottom of the base making it easier than ever to choose the right lamp.



Lok-it!® PS

The standard lamps of the Lok-it!® series comes with a cutout in the base, which enables improved heat management in the moving head.



Lok-it!® PS Brilliant

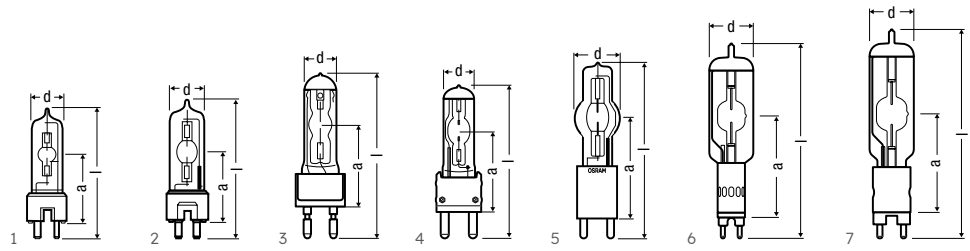
When color brilliance has to be key, the Lok-it!® PS Brilliant lamps impress with lifelike colors, thanks to their high CRI of 95.



Lok-it!® PS Blue

Crisp light at the switch of a button? The Lok-it!® PS Blue delivers 7500 Kelvin light-power.

Technical data

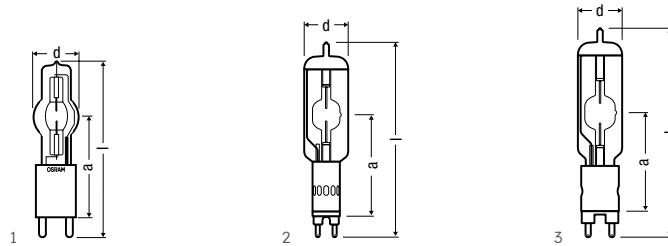


HMI® DIGITAL lamp types

| Product reference | Product number | W | V | A | | lm | t(h) | K | | LCL a (mm) | | |
|---------------------|----------------|-------|-----|------|--------|---------|------|----------------------|------|---------------|-----|---|
| HMI® DIGITAL 200W | 4052899984110 | 200 | 69 | 2.9 | GZY9.5 | 16000 | 200 | 6900 ¹⁾ | 19.2 | 39 | 80 | 1 |
| HMI® DIGITAL 400W | 4052899984127 | 400 | 75 | 5.3 | GZZ9.5 | 32500 | 650 | 6700 ¹⁾ | 23 | 60 | 110 | 2 |
| HMI® DIGITAL 575W | 4052899984134 | 575 | 94 | 6.1 | G22 | 49000 | 1000 | 6400 ¹⁾ | 30 | 70 | 145 | 3 |
| HMI® DIGITAL 800W | 4052899984141 | 800 | 95 | 8.4 | G22 | 69000 | 1000 | 6300 ¹⁾ | 30 | 70 | 145 | 3 |
| HMI® DIGITAL 1200W | 4052899984196 | 1200 | 100 | 12 | G38 | 110000 | 1000 | 6800 ¹⁾ | 40.4 | 107 | 200 | 4 |
| HMI® DIGITAL 1600W | 4062172294911 | 1600 | 155 | 10.3 | G22 | 144000 | 750 | 7250 ¹⁾ | 40 | 85 | 173 | 3 |
| HMI® DIGITAL 1800W | 4052899984202 | 1800 | 140 | 12.9 | G38 | 165000 | 750 | 6500 ¹⁾ | 40.4 | 107 | 200 | 4 |
| HMI® DIGITAL 2500W | 4052899984295 | 2500 | 118 | 24.5 | G38 | 220000 | 500 | 6300 ¹⁾ | 60 | 127 | 220 | 5 |
| HMI® DIGITAL 4000W | 4052899984301 | 4000 | 200 | 24 | G38 | 387000 | 500 | 6000 ¹⁾ | 75 | 141 | 250 | 5 |
| HMI® DIGITAL 6000W | 4062172005890 | 6000 | 121 | 50 | GX38 | 600000 | 500 | 6000 ¹⁾ | 74 | 210 | 360 | 6 |
| HMI® DIGITAL 9000W | 4062172001908 | 9000 | 165 | 56 | GX38 | 875000 | 400 | 6000 ¹⁾ | 80 | 210 | 380 | 6 |
| HMI® DIGITAL 18000W | 4008321098955 | 18000 | 225 | 88 | GX51 | 1600000 | 350 | 6000 ^{1,2)} | 100 | 260 | 495 | 7 |

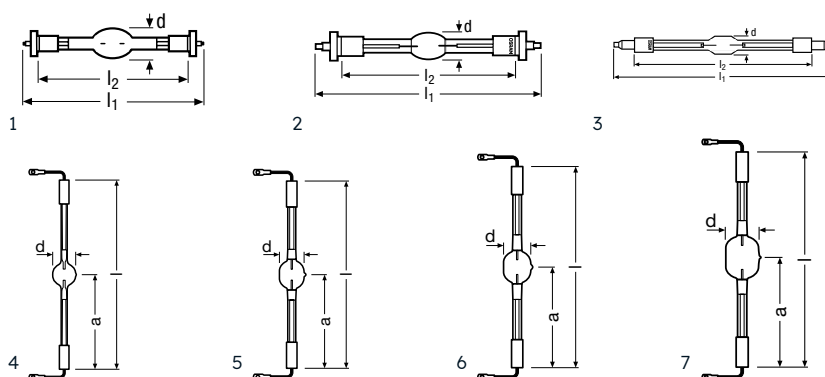
1) Average value on electronic ballast

2) Preliminary data



HMI®, single-ended

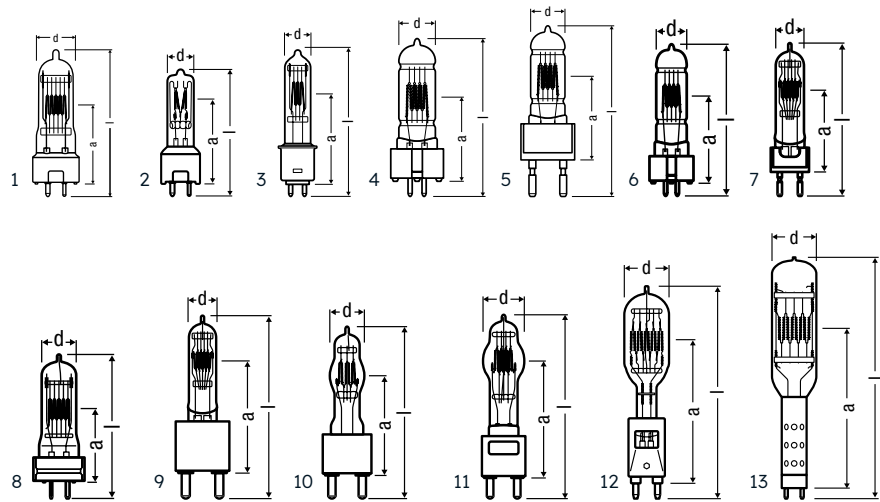
| Product reference | Product number | W | V | A | t(h) | lm | K | | | | | | |
|---------------------|----------------|-------|-----|------|------|---------|------|-----|-----|-----|------|------|-----|
| HMI 2500 W/SE/XS | 4050300284293 | 2500 | 115 | 25.6 | 500 | 240000 | 6000 | 60 | 225 | 290 | p30 | G38 | 1 1 |
| HMI 4000 W/SE/XS | 4008321244314 | 4000 | 200 | 24 | 500 | 380000 | 6000 | 75 | 250 | 340 | p15 | G38 | 1 1 |
| HMI 12000 W/SE/XS | 4050300650418 | 12000 | 160 | 84 | 500 | 1150000 | 6000 | 100 | 260 | 460 | s135 | GX38 | 1 2 |
| HMI 18000 W/SE GX51 | 4008321098955 | 18000 | 225 | 88 | 350 | 1600000 | 6000 | 100 | 260 | 495 | s135 | GX51 | 1 3 |



HMI®, double-ended

| Product reference | Product number | W | V | A | t [h] | Im | K | Ø [mm] | l [mm] | l1 max. [mm] | | | | |
|-------------------|----------------|-------|-----|------|-------|---------|------|--------|--------|--------------|-----|----------|---|---|
| HMI 575 W/DXS | 4008321285102 | 575 | 95 | 7 | 1000 | 49000 | 6000 | 21 | 135 | 115 | Any | SFc10-4 | 1 | 1 |
| HMI 1200 W/DXS | 4008321931153 | 1200 | 100 | 13.8 | 1000 | 110000 | 6000 | 27 | 220 | 180 | Any | SFc15.5 | 1 | 2 |
| HMI 2500 W/S XS | 4050300025780 | 2500 | 115 | 25.6 | 500 | 240000 | 6000 | 31.5 | 210 | 150 | p30 | SFa21-12 | 1 | 3 |
| HMI 2500 W/DXS | 4008321182197 | 2500 | 115 | 25.6 | 500 | 240000 | 6000 | 31.5 | 355 | 290 | p30 | SFa21 | 1 | 3 |
| HMI 4000 W/DXS | 4008321210203 | 4000 | 200 | 24 | 500 | 380000 | 6000 | 36 | 405 | 340 | p15 | SFa21 | 1 | 3 |
| HMI 6000 W/DXS | 4008321210210 | 6000 | 125 | 55 | 500 | 570000 | 6000 | 54 | 450 | - | p15 | S25.5 | 1 | 4 |
| HMI 12000 W/DXS | 4008321210227 | 12000 | 160 | 84 | 500 | 1150000 | 6000 | 64 | 470 | - | p15 | S30 | 1 | 5 |
| HMI 18000 W/DXS | 4008321370280 | 18000 | 229 | 79 | 500 | 1700000 | 6000 | 77 | 500 | - | p15 | S30 | 1 | 6 |
| HMI 24000 W/DXS | 4008321355805 | 24000 | 280 | 86 | 500 | 2300000 | 6000 | 83 | 500 | - | p15 | S30 | 1 | 7 |

Technical data

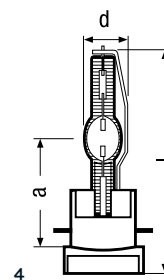
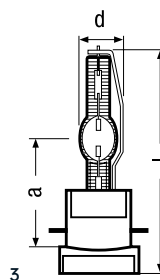
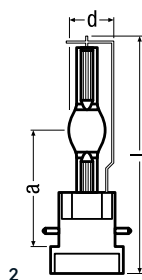
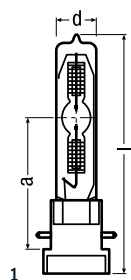


Halogen studio lamps

| Product reference | Product number | ANSI | LIF | W | V | t[h] | K | Ø [mm] | l [mm] | LCL a [mm] | | | | |
|-------------------|----------------|------|--------|-------|-----|------|------|--------|--------|---------------|------|--------|----|----|
| 64673 | 4052899015463 | FSL | CP/81 | 300 | 230 | 200 | 3100 | 18 | 80 | 46.5 | Any | GY9.5 | 12 | 2 |
| 64673 | 4052899015487 | FSK | CP/81 | 300 | 240 | 200 | 3100 | 18 | 80 | 46.5 | Any | GY9.5 | 12 | 2 |
| 64670 | 4008321624017 | GCV | T/25 | 500 | 230 | 300 | 3000 | 23 | 90 | 46.5 | s90 | GY9.5 | 12 | 1 |
| 64670 | 4008321624031 | GCV | T/25 | 500 | 240 | 300 | 3000 | 23 | 90 | 46.5 | s90 | GY9.5 | 12 | 1 |
| 64674 | 4052899015500 | FRH | CP/82 | 500 | 230 | 200 | 3200 | 18 | 80 | 46.5 | Any | GY9.5 | 12 | 2 |
| 64674 | 4052899015524 | FRJ | CP/82 | 500 | 240 | 200 | 3200 | 18 | 80 | 46.5 | Any | GY9.5 | 12 | 2 |
| 64680 | 4008321098573 | | A1/244 | 500 | 230 | 50 | 3200 | 22 | 75 | 36.5 | Any | GY9.5 | 12 | 1 |
| 64680 | 4008321098597 | | A1/244 | 500 | 240 | 50 | 3200 | 22 | 75 | 36.5 | Any | GY9.5 | 12 | 1 |
| 64716 | 4008321623973 | GKV | | 600 | 230 | 250 | 3050 | 19 | 101 | 60.5 | s90 | G9.5 | 12 | 3 |
| 64716 | 4008321623997 | GKV | | 600 | 240 | 250 | 3050 | 19 | 101 | 60.5 | s90 | G9.5 | 12 | 3 |
| 64717 | 4008321624215 | FRL | CP/89 | 650 | 230 | 150 | 3200 | 23 | 90 | 46.5 | s90 | GY9.5 | 12 | 1 |
| 64717 | 4008321624239 | FRM | CP/89 | 650 | 240 | 150 | 3200 | 23 | 90 | 46.5 | s90 | GY9.5 | 12 | 1 |
| 64718 | 4008321624253 | GCT | T/27 | 650 | 230 | 400 | 3000 | 23 | 90 | 46.5 | s90 | GY9.5 | 12 | 1 |
| 64718 | 4008321624277 | GCT | T/27 | 650 | 240 | 400 | 3000 | 23 | 90 | 46.5 | s90 | GY9.5 | 12 | 1 |
| 64719 | 4008321638076 | | T/12 | 650 | 230 | 750 | 3000 | 26 | 110 | 55 | s90 | GX9.5 | 20 | 4 |
| 64720 | 4008321638090 | | CP/23 | 650 | 230 | 100 | 3200 | 26 | 110 | 55 | s90 | GX9.5 | 20 | 4 |
| 64721 | 4008321638113 | FKH | CP/39 | 650 | 230 | 100 | 3200 | 26 | 140 | 63.5 | s90 | G22 | 20 | 5 |
| 64678 | 4008321624055 | | | 800 | 230 | 250 | 3200 | 19 | 101 | 60.5 | s90 | G9.5 | 12 | 3 |
| 64752 | 4008321624475 | FWS | T/29 | 1200 | 230 | 400 | 3000 | 27 | 125 | 67 | s90 | GX9.5 | 20 | 6 |
| 64752 | 4008321624499 | FWS | T/29 | 1200 | 240 | 400 | 3000 | 27 | 125 | 67 | s90 | GX9.5 | 20 | 6 |
| 64754 | 4008321624529 | | CP/90 | 1200 | 230 | 200 | 3200 | 27 | 125 | 67 | s90 | GX9.5 | 20 | 6 |
| 64756 | 4008321624550 | | CP/93 | 1200 | 230 | 200 | 3200 | 26 | 140 | 63.5 | s90 | G22 | 20 | 5 |
| 93723 | 4008321370594 | | CP/110 | 1200 | 80 | 300 | 3200 | 22 | 120.7 | 63.5 | s135 | 2 pins | 12 | 7 |
| 64777 | 4008321632197 | | CP/92 | 2000 | 230 | 400 | 3200 | 35 | 175 | 90 | s90 | G22 | 12 | 7 |
| 64787 | 4008321653994 | | CP/75 | 2000 | 230 | 400 | 3200 | 35 | 160 | 75 | s90 | G22 | 12 | 7 |
| 64788 | 4008321632173 | FTM | CP/72 | 2000 | 230 | 400 | 3200 | 35 | 145 | 70 | s90 | GY16 | 12 | 8 |
| 64788 | 4008321632180 | FTM | CP/72 | 2000 | 240 | 400 | 3200 | 35 | 145 | 70 | s90 | GY16 | 12 | 8 |
| 64789 | 4008321654021 | FKK | CP/73 | 2000 | 230 | 400 | 3200 | 35 | 210 | 127 | s90 | G38 | 6 | 9 |
| 64789 | 4008321654038 | FKK | CP/73 | 2000 | 240 | 400 | 3200 | 35 | 210 | 127 | s90 | G38 | 6 | 9 |
| 64796 | 4008321653987 | | CP/91 | 2500 | 230 | 400 | 3200 | 35 | 175 | 90 | s90 | G22 | 12 | 7 |
| 64797 | 4052899129542 | | | 3000 | 230 | 400 | 3200 | 45 | 210 | 127 | s90 | G38 | 6 | 10 |
| 64805 | 4052899129580 | | CP/85 | 5000 | 120 | 400 | 3200 | 60 | 279.4 | 165 | s90 | G38 | 6 | 11 |
| 64805 | 4052899129566 | | CP/85 | 5000 | 230 | 400 | 3200 | 60 | 279 | 165 | s90 | G38 | 6 | 11 |
| 64805 | 4052899129573 | | CP/85 | 5000 | 240 | 400 | 3200 | 61 | 279 | 165 | s90 | G38 | 6 | 11 |
| 64815 | 4050300780696 | ECR | CP/83 | 10000 | 230 | 350 | 3200 | 80 | 400 | 254 | s45 | G38 | 6 | 12 |
| 64818 | 4008321792051 | BCM | CP/99 | 20000 | 230 | 350 | 3200 | 100 | 550 | 354 | s45 | G38 | 4 | 13 |



To access the energy label and product information sheet please visit our electronic product catalogue
https://www.osram.com/ecat/Halogen%20lamps-Entertainment-Specialty%20Lighting/com/en/GPS01_3169907/



Lok-it!® lamp types

| Product Name | Product Number | W | V | A | t _[h] | lm |
|-----------------------------------|----------------|------|-----|------|------------------|--------|
| Lok-it!® metal halide lamp | | | | | | |
| Lok-it!® HSD 300W/80/P28 | 4008321644831 | 300 | 95 | 3.2 | 2000 | 20500 |
| Lok-it!® HTI 400W/60/P28 | 4008321605481 | 400 | 65 | 6.2 | 750 | 30000 |
| Lok-it!® HTI 700W/60/P28 | 4008321510549 | 700 | 60 | 11.6 | 750 | 50000 |
| Lok-it!® HTI 700W/75/P50 | 4008321485205 | 700 | 68 | 10.3 | 750 | 50000 |
| Lok-it!® HTI 700W/75/P28 | 4052899179790 | 700 | 68 | 10.3 | 750 | 50000 |
| Lok-it!® HTI 1500W/60/P50 | 4008321553416 | 1500 | 100 | 15 | 750 | 130000 |
| Lok-it!® HTI 1500W/60/P50 M3W | 4008321818997 | 1500 | 100 | 15 | 750 | 130000 |
| Lok-it!® HTI 1600W/60/P50 | 4062172123488 | 1650 | 93 | 17.4 | 750 | 140000 |
| Lok-it!® HTI 2000 W/60/P50 | 4062172133098 | 2000 | 107 | 18.6 | 1000 | 165000 |
| Lok-it!® HTI 2000 W/75/P50 | 4062172133111 | 2000 | 100 | 20 | 1000 | 155000 |

| | | | | | | |
|------------------------------|---------------|------|-------|------|-----|--------|
| Lok-it!® Power Series | | | | | | |
| Lok-it!® 1000/PS | 4052899965157 | 1000 | 85 | 11.8 | 950 | 85000 |
| Lok-it!® 1000/PS Blue | 4052899965171 | 1000 | 85 | 11.8 | 750 | 75000 |
| Lok-it!® 1000/PS Brilliant | 4052899965164 | 1000 | 85 | 11.8 | 750 | 82000 |
| Lok-it!® 1400/PS Brilliant | 4052899965195 | 1400 | 95.5 | 14.7 | 750 | 118000 |
| Lok-it!® 1700/PS | 4052899965201 | 1700 | 84.5 | 20 | 750 | 135000 |
| Lok-it!® 1800/PS Brilliant | 4062172047081 | 1800 | 88 | 20.5 | 750 | 148000 |
| Lok-it!® 2000/PS Brilliant | 4062172169561 | 2000 | 107.5 | 18.6 | 750 | 165000 |

| Product Name | K | R _a | ∅ (mm) | l (mm) | LCL ∅ (mm) | + | PGJX | No. |
|-----------------------------------|------|----------------|--------|--------|------------|-----|--------|-----|
| Lok-it!® metal halide lamp | | | | | | | | |
| Lok-it!® HSD 300W/80/P28 | 8700 | > 70 | 23 | 121 | 67 | 5 | PGJX28 | 1 |
| Lok-it!® HTI 400W/60/P28 | 6500 | > 80 | 23 | 103 | 56 | 3.4 | PGJX28 | 2 |
| Lok-it!® HTI 700W/60/P28 | 5800 | > 70 | 23 | 112 | 56 | 4 | PGJX28 | 2 |
| Lok-it!® HTI 700W/75/P50 | 7250 | > 75 | 24 | 125 | 65 | 4 | PGJX50 | 3 |
| Lok-it!® HTI 700W/75/P28 | 6700 | > 75 | 23 | 112 | 56 | 4 | PGJX28 | 2 |
| Lok-it!® HTI 1500W/60/P50 | 6000 | > 85 | 29 | 128 | 65 | 6.1 | PGJX50 | 3 |
| Lok-it!® HTI 1500W/60/P50 M3W | 6100 | > 85 | 29 | 130 | 67 | 7 | PGJX50 | 3 |
| Lok-it!® HTI 1600W/60/P50 | 5800 | > 92 | 28 | 128 | 65 | 5.5 | PGJX50 | 3 |
| Lok-it!® HTI 2000 W/60/P50 | 6000 | 95 | 29 | 130 | 67 | 7 | PGJX50 | 3 |
| Lok-it!® HTI 2000 W/75/P50 | 7500 | 77 | 29 | 130 | 67 | 7 | PGJX50 | 3 |

| | | | | | | | | |
|------------------------------|------|------|------|-------|----|-----|--------|---|
| Lok-it!® Power Series | | | | | | | | |
| Lok-it!® 1000/PS | 5800 | > 80 | 28 | 112.5 | 56 | 5.5 | PGJX36 | 4 |
| Lok-it!® 1000/PS Blue | 7500 | > 70 | 28 | 112.5 | 56 | 5.5 | PGJX36 | 4 |
| Lok-it!® 1000/PS Brilliant | 5900 | > 92 | 28 | 112.5 | 56 | 5.5 | PGJX36 | 4 |
| Lok-it!® 1400/PS Brilliant | 5800 | > 93 | 28 | 120 | 60 | 5.3 | PGJX28 | 4 |
| Lok-it!® 1700/PS | 5600 | > 92 | 26 | 121 | 60 | 5.2 | PGJX28 | 4 |
| Lok-it!® 1800/PS Brilliant | 5600 | > 92 | 28.5 | 121 | 60 | 5.2 | PGJX28 | 4 |
| Lok-it!® 2000/PS Brilliant | 6000 | 95 | 28.5 | 121 | 60 | 7 | PGJX28 | 4 |



ams OSRAM Group
ams-osram.com

OSRAM GmbH
Marcel-Breuer-Strasse 6
80807 Munich, Germany
Phone +49 89-6213-0
Fax +49 89-6213-2020
www.osram.com

